



# 17" VS DRILL PRESS

30-217

### Variable Speeds

Quick adjusting variable speed pulley system  
Speed Range: 200-700 / 600-2,200 RPM



### Large Spindle Travel

6" Spindle Travel and a 5/8" chuck



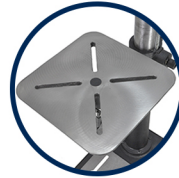
### Digital RPM Display

Easy to read digital display and safety ON/OFF switch



### Large Cast Iron Table

14" x 14" Table rotates 360° and tilts 90°



## FEATURES:

- **Motor**
  - Horsepower.....1-1/2 HP
  - Amps.....13.3/6.7
  - Volts.....115/230V, 60Hz
  - RPM.....1,720
- **Drill Press**
  - Swing.....17"
  - Chuck Size.....5/8"
  - Chuck Taper.....JT3
  - Drilling Capacity.....1"
  - Spindle Travel.....6"
  - Spindle Taper.....MT2
  - Head Rotates.....360°
  - Speeds.....Variable
  - Speed Range.....200 - 700 / 600 - 2,200
  - Quill Diameter.....2-5/8"

## DIMENSIONS:

- **Table**
  - Table Size.....14" x 14"
  - Table Tilts.....90°
  - Table Rotates.....360°
  - Maximum Chuck to Table.....27-3/4"
  - Maximum Chuck to Base.....46-5/16"
  - Column Diameter.....3-1/8"
- **Overall**
  - Height.....70-1/8"
  - Base Size.....19-7/8" x 13-1/2"
  - Net Weight.....192 lbs.
  - Shipping Weight.....205 lbs.
  - Shipping Carton.....60" x 27-1/4" x 10-3/16"
- **Warranty.....5 Years**



For more information or to find a distributor near you, please visit:

[www.rikontools.com](http://www.rikontools.com)



**AVAILABLE ACCESSORIES**  
30-217



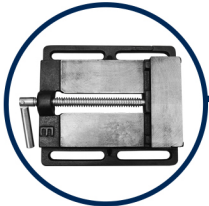
### 29-202

Mortising Kit



### Chisel & Bit

- 1/4" - 29-914L
- 5/16" - 29-915L
- 3/8" - 29-913
- 1/2" - 29-912



### Vises

- 3" Drill Press Vise - 93-010
- 4" Drill Press Vise - 93-020
- 5" Drill Press Vise - 93-030
- 6" Drill Press Vise - 93-040



For more information or to find a distributor near you, please visit:

[www.rikontools.com](http://www.rikontools.com)