



20" FLOOR DRILL PRESS

30-240

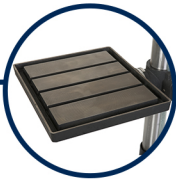
Multiple Spindle Speeds

12 available spindle speeds are available with a range from 180 to 3,865 RPM



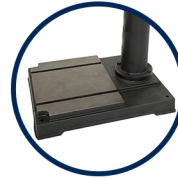
Solid Work Surface

Comes with a 16-1/2" x 18-3/4" adjustable work table



3/4" Chuck

Chuck has a big 3/4" holding capacity



Solid Base

Base is made from sturdy cast iron with a wide footprint for stability



FEATURES:

• MOTOR

Horsepower.....	1 HP TEFC
Amps, Watts.....	13.5, 900W
Volts.....	120V, 60Hz
RPM.....	1,720
Swing.....	20"
Chuck Size.....	3/4"
Chuck Taper.....	JT3
Drilling Capacity.....	1"
Spindle Travel.....	4-3/4"
Head Rotates.....	360°
Spindle Taper.....	MT3
Speeds.....	12
Speed Range (RPM).....	180 - 3,865
Quill Diameter.....	3"

DIMENSIONS:

• TABLE

Table.....	16-1/2" x 18-3/4"
Table Tilts.....	90°
Table Rotates.....	360°
Maximum Chuck to Table.....	24-9/16"
Maximum Chuck to Base.....	43-13/16"
Column Diameter.....	3"

• OVERALL

Height.....	68"
Base Size.....	22-3/4" x 16-1/2"
Net Weight.....	250 lbs.
Shipping Weight.....	260 lbs.
Shipping Carton.....	57" x 25-1/2" x 12-1/4"

• WARRANTY.....5 YEARS



For more information or to find a distributor near you, please visit:

www.rikontools.com

RIKON

AVAILABLE ACCESSORIES
30-240



12-201

LED Gooseneck Worklight
with Magnetic Base and
Magnetic Clip



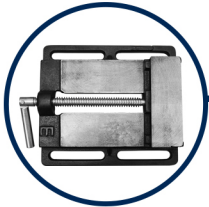
29-202

Mortising Kit



Chisel & Bit

1/4" - 29-914L
5/16" - 29-915L
3/8" - 29-913
1/2" - 29-912



Vises

3" Drill Press Vise - 93-010
4" Drill Press Vise - 93-020
5" Drill Press Vise - 93-030
6" Drill Press Vise - 93-040



For more information or to find a distributor near you, please visit:

www.rikontools.com