

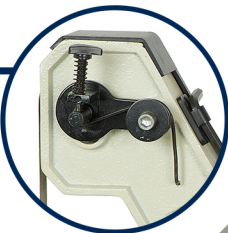
RIKON

1" x 42" BELT / 8" DISC SANDER

50-144

Belt Tracking

Easily adjust your belt with the easy grip tracking knob



Tables Tilt

Cast iron table tilt from 0° - 45°
Miter gauge included



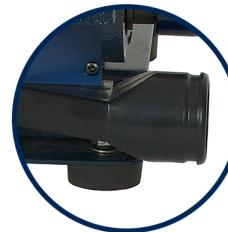
Safety Switch

Safety ON/OFF switch comes with locking key to prevent unauthorized use



Dust Port

Has two dust ports included. 1-3/4" and 2"



- **Motor**
 - Horsepower.....5/8 HP
 - Amps.....5.8
 - Volts.....120V, 60 Hz
- **Table**
 - Disc Table Size.....7-1/4" x 6"
 - Belt Table Size.....10" x 4"
 - Tables Tilt.....0° to 45°
 - Miter Gauge.....Included
 - Miter Gauge Slot.....7/16" x 1/4"
- **Belt**
 - Size.....1" x 42"
 - Speed.....3,000 SFPM
- **Disc**
 - Diameter.....8" PSA
 - Speed.....1,725 RPM

- **Overall**
 - Height.....19-1/2"
 - Width.....14-1/2"
 - Depth.....26"
 - Base Size.....18-5/16" x 11"
 - Dust Ports.....1@2", 1@1-3/4"
 - Net Weight.....59 lbs.
 - Shipping Weight.....63 lbs.
 - Shipping Carton..20-1/4" x 13-1/4" x 15-1/2"
 - Warranty.....5 Years

For more information or to find a distributor near you, please visit:

www.rikontools.com



RIKON

AVAILABLE ACCESSORIES

50-144



12-201

LED Gooseneck Worklight
with Magnetic Base and
Magnetic Clip



Sanding Belts

1" x 42" Sanding Belt 80 Grit (PK5)	50-3080
1" x 42" Sanding Belt 120 Grit (PK5)	50-3120
1" x 42" Sanding Belt 150 Grit (PK5)	50-3150
1" x 42" Sanding Belt 180 Grit (PK5)	50-3180
1" x 42" Sanding Belt 240 Grit (PK5)	50-3220
1" x 42" Sanding Belt 320 Grit (PK5)	50-3320
1" x 42" Sanding Belt Asst. (PK10) (2ea. 80, 120, 150, 180, 240)	50-3999



Sanding Discs

8" Sanding Disc 60 Grit PSA (PK5)	50-8060
8" Sanding Disc 80 Grit PSA (PK5)	50-8080
8" Sanding Disc 120 Grit PSA (PK5)	50-8120
8" Sanding Disc 180 Grit PSA (PK5)	50-8180
8" Sanding Disc 240 Grit PSA (PK5)	50-8220
8" Sanding Disc Asst. PSA (2ea. PK10)	50-8999



For more information or to find a distributor near you, please visit:

www.rikontools.com