

Woodpeckers®

STEALTHSTOP™ MITER GAUGE FENCE

O W N E R ' S M A N U A L

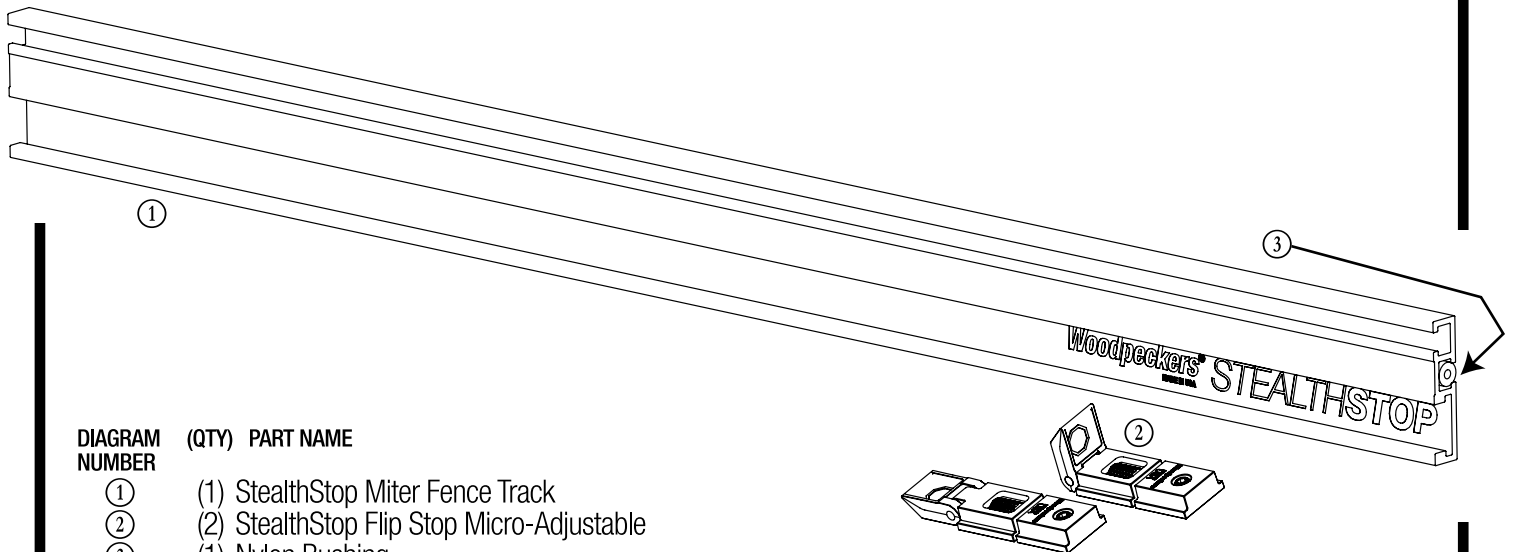


DIAGRAM NUMBER (QTY) **PART NAME**

- ① (1) StealthStop Miter Fence Track
- ② (2) StealthStop Flip Stop Micro-Adjustable
- ③ (1) Nylon Bushing

HARDWARE BAG A

- (2) Button Head Cap Screw, 10-32 x 7/8
- (2) SAE Washer #10
- (2) Oval Nut 10-32
- (1) Hex Key 1/8"
- (1) UHMW Track Strip

The StealthStop Miter Gauge Fence is a fence and stop system that adapts to most table saw miter gauges. A 29" extruded fence and two StealthStop flip stops allow for repeatable cross-cuts and miters. When the stops are not needed, they retract completely within the fence. The StealthStop fence will fit many miter gauges right out of the box (*such as SawStop and Powermatic*). Most others only require a simple adapter plate you can make in about 10 minutes.



Scan the QR code above
to watch the video
or visit woodpeck.com
under the video tab towards
the bottom of the product page.

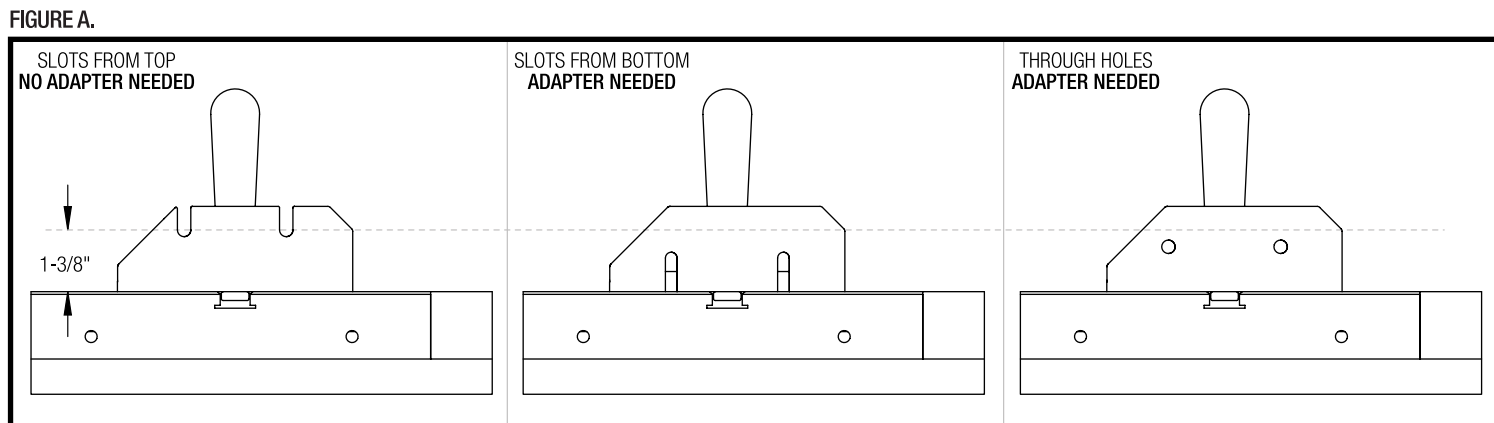
If you think you're missing anything, email us at mailroom@woodpeck.com.
You can also call us at 800-752-0725 from 9:00 a.m. to 4:00 p.m. EST Monday - Friday.

I. CHECKING FOR FIT

1. Inspect your miter gauge, checking to see what provision is available for mounting a sacrificial fence.

Some examples include: slots that come in from the top, slots that come in from the bottom, holes all the way through, and holes into a hollow section.

- A. If your miter gauge has slots or holes that are approximately 1-3/8" (35mm) above the saw deck, you will not need an adapter plate. *Just use the included hardware to attach the StealthStop fence directly to the head of your miter gauge.* **Figure A.**
- B. If the slots/holes do not cross the 1-3/8" (35mm) mark, you will need to make an adapter plate.



II. MAKING AN ADAPTER PLATE

1. Measure the length of the face of your miter gauge.

Figure B.

2. Cut a piece of 1/2" plywood 2-5/16" wide and 1-1/2" longer than the face of your miter gauge.

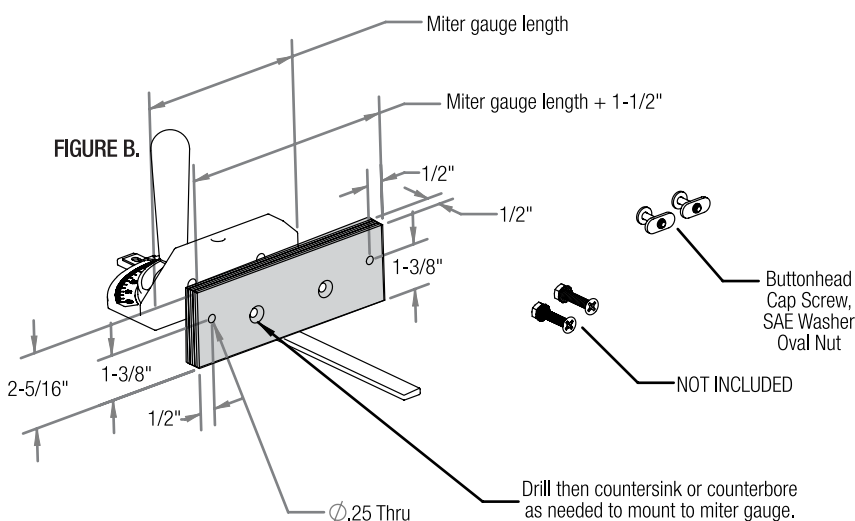
3. Determine the position of the holes required to mount the adapter plate flush with the bottom of the miter gauge head and mark them.

4. Mark the position of the holes to mount the StealthStop fence at 1-3/8" from the bottom and 1/2" in from the ends of the adapter plate.

5. Confirm that the 1/2" dimension from the end will not interfere with the head of the miter gauge. Adjust as needed.

6. Drill 1/4" holes at each location.

7. (2) Button Head Cap Screw (2) SAE Washers and (2) Oval Nuts are supplied to attach the fence to the adapter plate (*or directly to the miter gauge*). You will need to determine the correct length and diameter needed to attach the adapter plate to your miter gauge. Typically, counter-sunk flathead machine screws work best, in 10-24, 10-32 or 1/4-20 sizes. That will depend on the hole size in your fence. Counter-sink or counter-bore the adapter block so the heads of the machine screws are completely below the face of the adapter block and do not interfere with the StealthStop Fence when installed.



III. INSTALLING THE FENCE

1. To install the StealthStop Miter Fence Track ①, begin by applying the adhesive backed UHMW Track Strip to the bottom of the Miter Fence Track. *Slightly more is supplied than is required, and it can be trimmed flush with a razor blade once installed.*
2. Be sure to apply the UHMW Track Strip along the bottom of the track such that it does not protrude from the front or back of the Miter Fence Track. **Figure C.**
3. After the strip is applied, pre-assemble the Button Head Cap Screws, SAE Washers and Oval Nuts, into your miter gauge or the adapter plate you have made.
4. Slide the StealthStop Miter Fence Track onto the pre-assembled mounting hardware, and adjust to desired position relative to the blade of your table saw. *It is recommended to leave a minimum 1/16" gap (2mm).* **Figure D.**
5. Tighten the Button Head Cap Screws with the Hex Wrench.

FIGURE C.

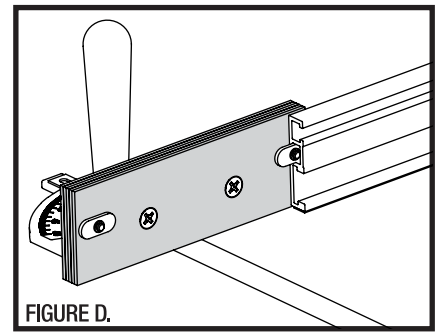
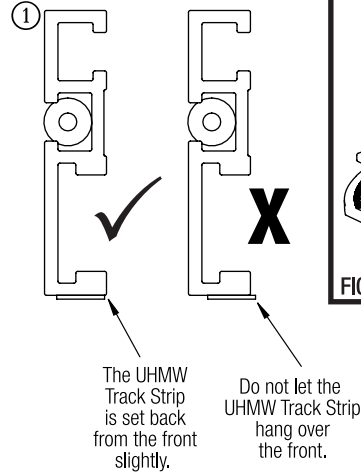


FIGURE D.

IV. USING THE STEALTHSTOP FLIP STOPS

- The StealthStop Flip Stop ② is tool-free for raising/lowering the flag, and for micro-adjusting position. It does require the Hex Key to lock the stop in place. When lowered, the Flip Stop is fully below the surface of the Combo Track and out of the way. **FIGURE E.**
- To lock/unlock the Flip Stop, use the Hex Key in the exposed hex of the locking screw. **FIGURE F.**
- To move the Flip Stop around quickly, use the Hex Key to loosen the lock, and then move the stop with the Hex Key still installed.
- To micro-adjust the position of the Flip Stop, spin the knurled brass thumb wheel to move the flag forward or backward.
- To raise / lower the flag, simply use your finger tip to snap it up or down. **FIGURE E-1.**

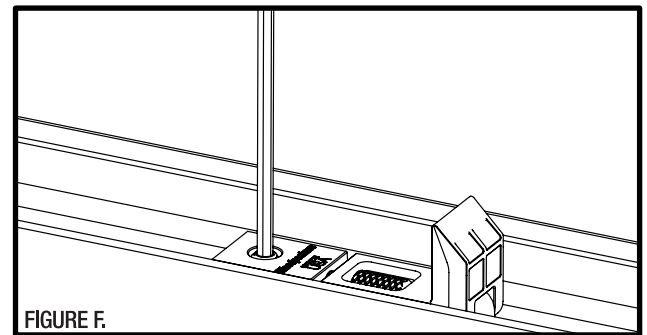
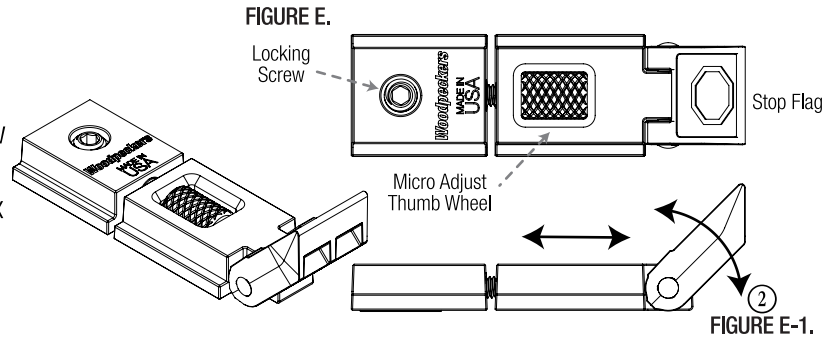


FIGURE F.

V. STORING THE HEX KEY

- The included Hex Key stores conveniently in the Nylon Bushing ③ at the far end of the StealthStop Miter Fence Track ①. **FIGURE G.**
- The Hex Key can be used for moving the stops, and for adjusting the spacing of the fence to the blade when changing angles.

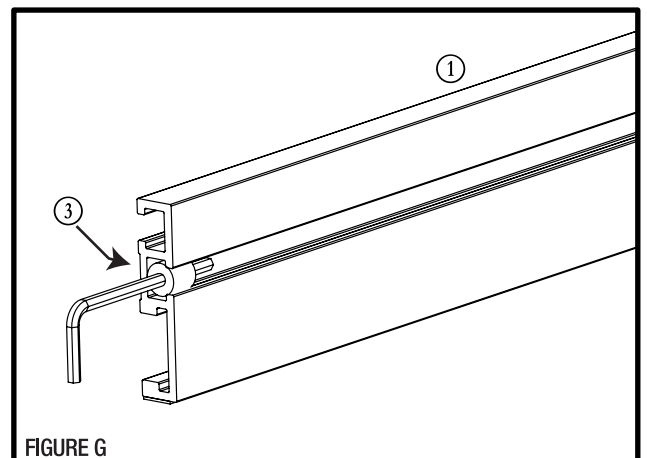
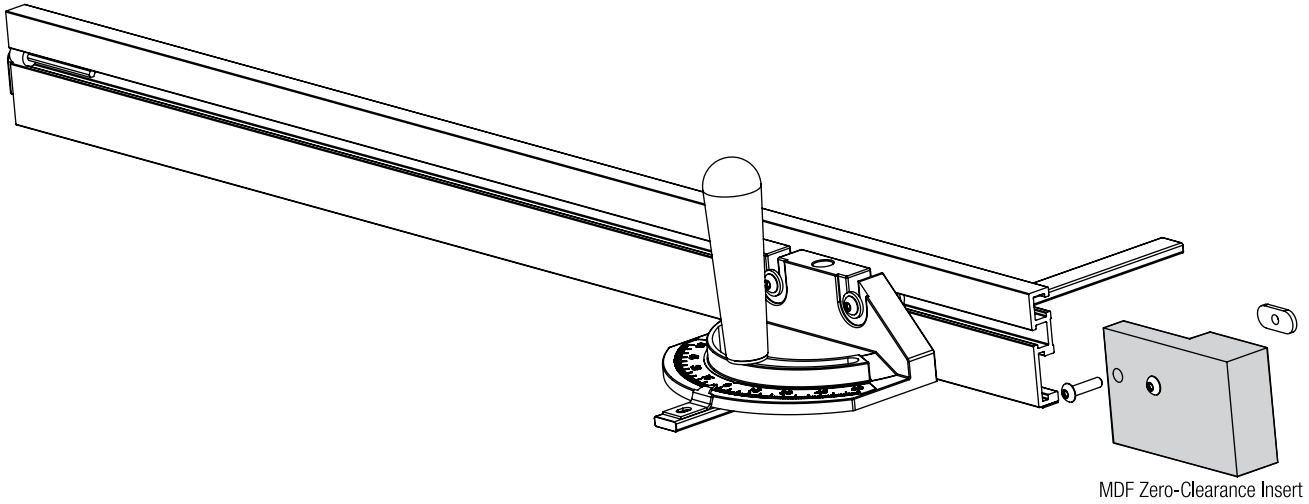


FIGURE G

VI. OPTIONAL ACCESSORIES

- Additional StealthStop Flip Stops are available in 2 packs.
- A MDF Zero-Clearance Insert is available to reduce chance of tear out when cross cutting. These inserts are available in 3 packs, and come with necessary hardware to mount to the fence.
- Visit Woodpeck.com



Woodpeckers®

Woodpeckers, LLC Strongsville, Ohio

woodpeck.com

© 2022 Woodpeckers, LLC



woodpeck.com

At Woodpeckers we are constantly reviewing & improving our tools. The most current version of our instruction manuals are always available to download at woodpeck.com.

(Located in the bottom section of the tool's page under the "Additional Information" or "Instructions" tabs.)



Be the first to know all the new products, *OneTIME Tools* & sales by subscribing to our eClub. *(Located at the top center of our webpage woodpeck.com.)*



Subscribe to our YouTube channel to stay up-to-date on all the latest tool tips & tricks.



INTERACT WITH US! Follow us on Facebook, Instagram & TikTok!



Enjoy shop tips, project ideas, tool techniques & more in our Woodworking Resource Center/Blog. *(Located at the bottom center of our webpage woodpeck.com.)*



WARNING!

This product can expose you to chemicals, including chromium, which is known to the State of California to cause cancer and birth defects or other reproductive harm.

For more information go to www.P65Warnings.ca.gov